



### FV D8

Sample ID: G1L0282-06

Matrix: Industrial Hemp

Test ID: 5021959

Source ID:

Date Sampled: 12/14/21

Date Accepted: 12/14/21

*Sweet Bloom LLC*

### Results at a Glance

Total THC : 0.2496 %

Total CBD : 6.690 %

Total CBG : 1.216 %

delta 8-THC : 3.768 % **PASS**



**ISO 17025  
ACCREDITED  
LABORATORY**

Eric Wendt  
Chief Science Officer - 12/17/2021

These results relate only to the sample included on this report. The report may not be reproduced except in full, without the written permission of Green Leaf Lab.

This is for informational testing and is not compliance testing. Lab results apply to the sample as received.



### FV D8

Sample ID: G1L0282-06

Matrix: Industrial Hemp

Test ID: 5021959

Source ID:

Date Sampled: 12/14/21

Date Accepted: 12/14/21

Sweet Bloom LLC

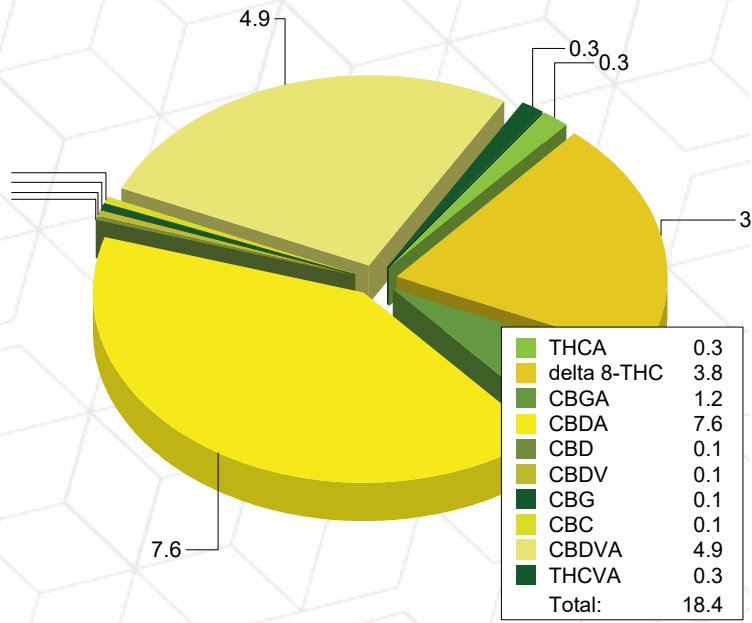
### Potency Analysis

Date/Time Extracted: 12/16/21 12:46

Analysis Method/SOP: 215

Batch Identification: 2151044

Cannabinoids	LOQ (%)	% by Wt.	mg/g	Cannabinoids Profile
Total THC	0.009080	0.2496	2.496	
Total CBD	0.008300	6.690	66.9	
Total CBG	7.900E-4	1.216	12.16	
THCA	5.000E-4	0.2846	2.846	
delta 9-THC	5.000E-4	< LOQ	< LOQ	
delta 8-THC	0.01796	3.768	37.68	
THCV	0.005055	< LOQ	< LOQ	
THCVA	0.001885	0.2528	2.528	
CBD	0.002000	0.05343	0.5343	
CBDA	0.002000	7.567	75.67	
CBDV	0.005000	0.1012	1.012	
CBDVA	0.006560	4.915	49.15	
CBN	0.002990	< LOQ	< LOQ	
CBG	7.900E-4	0.1256	1.256	
CBGA	7.900E-4	1.242	12.42	
CBC	0.008965	0.09836	0.9836	



Total THC = delta 9-THC + (THCA \* 0.877)

Total CBD = CBD + (CBDA \* 0.877)

Total CBG = CBG + (CBGA \* 0.878)

LOQ=Limit of Quantification, the lowest measurable concentration of an analyte.



ISO 17025  
ACCREDITED  
LABORATORY

Eric Wendt  
Chief Science Officer - 12/17/2021

These results relate only to the sample included on this report. The report may not be reproduced except in full, without the written permission of Green Leaf Lab.

This is for informational testing and is not compliance testing. Lab results apply to the sample as received.



### Quality Control Potency

Batch: 2151044 - 215-Hemp

Blank(2151044-BLK1)							
Analyte	Result	LOQ	Units	%Recovery Limits	Extracted	Analyzed	Notes
THCA	< LOQ	0.002	%		12/16/21 12:46	12/17/21 03:07	
THCA	< LOQ	0.002000	%		12/16/21 12:46	12/17/21 03:07	
delta 9-THC	< LOQ	0.002	%		12/16/21 12:46	12/17/21 03:07	
delta 9-THC	< LOQ	0.002000	%		12/16/21 12:46	12/17/21 03:07	
delta 8-THC	< LOQ	0.01796	%		12/16/21 12:46	12/17/21 03:07	
delta 8-THC	< LOQ	0.018	%		12/16/21 12:46	12/17/21 03:07	
THCV	< LOQ	0.020	%		12/16/21 12:46	12/17/21 03:07	
THCV	< LOQ	0.02022	%		12/16/21 12:46	12/17/21 03:07	
THCVA	< LOQ	0.008	%		12/16/21 12:46	12/17/21 03:07	
THCVA	< LOQ	0.007540	%		12/16/21 12:46	12/17/21 03:07	
CBD	< LOQ	0.002	%		12/16/21 12:46	12/17/21 03:07	
CBD	< LOQ	0.002000	%		12/16/21 12:46	12/17/21 03:07	
CBDA	< LOQ	0.002	%		12/16/21 12:46	12/17/21 03:07	
CBDA	< LOQ	0.002000	%		12/16/21 12:46	12/17/21 03:07	
CBDV	< LOQ	0.020	%		12/16/21 12:46	12/17/21 03:07	
CBDV	< LOQ	0.02000	%		12/16/21 12:46	12/17/21 03:07	
CBDVA	< LOQ	0.007	%		12/16/21 12:46	12/17/21 03:07	
CBDVA	< LOQ	0.006560	%		12/16/21 12:46	12/17/21 03:07	
CBN	< LOQ	0.012	%		12/16/21 12:46	12/17/21 03:07	
CBN	< LOQ	0.01196	%		12/16/21 12:46	12/17/21 03:07	
CBG	< LOQ	0.003	%		12/16/21 12:46	12/17/21 03:07	
CBG	< LOQ	0.003160	%		12/16/21 12:46	12/17/21 03:07	
CBGA	< LOQ	0.003	%		12/16/21 12:46	12/17/21 03:07	
CBGA	< LOQ	0.003160	%		12/16/21 12:46	12/17/21 03:07	
CBC	< LOQ	0.036	%		12/16/21 12:46	12/17/21 03:07	
CBC	< LOQ	0.03586	%		12/16/21 12:46	12/17/21 03:07	

Reference(2151044-SRM1)							
Analyte	% Recovery	LOQ	Units	%Recovery Limits	Extracted	Analyzed	Notes
THCA	104	0.0005	%	80-120	12/16/21 12:46	12/17/21 03:30	
THCA	104	5.000E-4	%	80-120	12/16/21 12:46	12/17/21 03:30	
delta 9-THC	102	5.000E-4	%	80-120	12/16/21 12:46	12/17/21 03:30	
delta 9-THC	102	0.0005	%	80-120	12/16/21 12:46	12/17/21 03:30	
CBD	103	0.0005	%	80-120	12/16/21 12:46	12/17/21 03:30	
CBD	103	5.000E-4	%	80-120	12/16/21 12:46	12/17/21 03:30	
CBDA	105	0.0005	%	80-120	12/16/21 12:46	12/17/21 03:30	
CBDA	105	5.000E-4	%	80-120	12/16/21 12:46	12/17/21 03:30	



Eric Wendt  
Chief Science Officer - 12/17/2021



### Notes and Definitions

Regulatory Compliance samples were collected onsite at facility according to ORELAP-SOP-001 and ORELAP-SOP-002 and following Sampling Plan FN117.  
Quality Control samples were tested as received.

- ATM Non-cannabis matrix related interference or suppression of Internal standard
- BLI Baseline Interference - Cannabinoid peak interference in chromatographic baseline affecting QC recovery .
- BLK Analyte detected in method blank, but not associated samples.
- BSH Blank Spike High - Blank Spike recovery above method limit. no detections in samples.
- BSL Blank Spike Low - Blank Spike recovery below lower method limit, analyte chromatography reviewed manually for all samples.
- CBD Interference due to co-elution
- CV1 CBD matrix interference on GC Pest chromatography
- CV2 CCV was above acceptance criteria, Non-detect samples are considered acceptable.
- INF CCV was below acceptance criteria, sample still exceeds regulatory limit.
- ISH One or more QC falls outside acceptance criteria. Data entered into LIMS for informational purposes only.
- ISL Internal Standard concentration is above acceptance criteria.
- MSH Internal Standard concentration is below acceptance criteria.
- MSI Matrix Spike High - Matrix Spike recovery above method limits.
- MSL Matrix Spike Interference - Matrix spike source sample contains analyte hit above calibration affecting recovery accuracy in Matrix Spike.
- TPP
- U Matrix Spike Low - Matrix Spike recovery below lower method limit, analyte chromatography reviewed manually for all samples.  
Internal Standard concentration outside control limit due to matrix interference



Eric Wendt  
Chief Science Officer - 12/17/2021

These results relate only to the sample included on this report. The report may not be reproduced except in full, without the written permission of Green Leaf Lab.

This is for informational testing and is not compliance testing. Lab results apply to the sample as received.